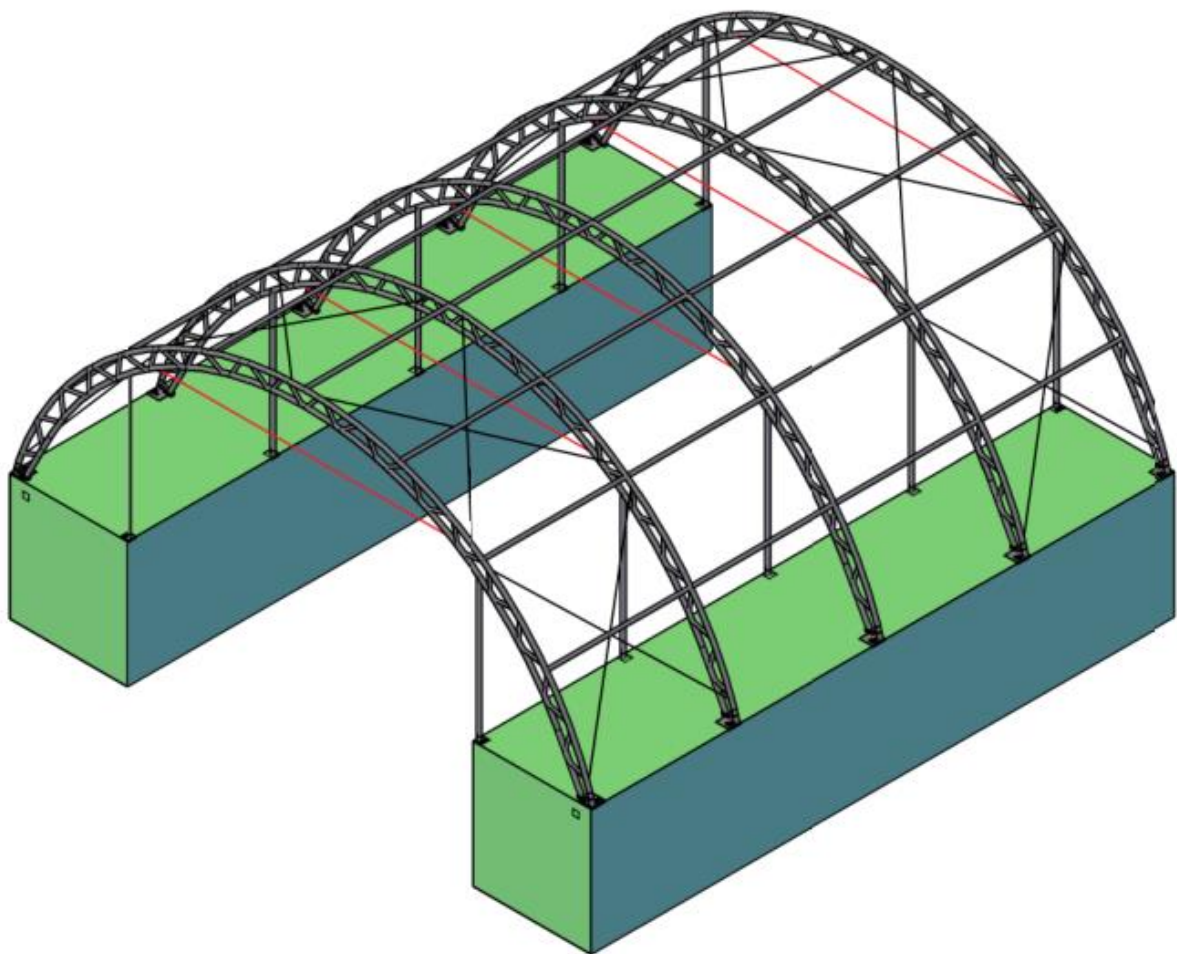


SHELTER ASSEMBLY MANUAL

Model # **C404015S**
L12 x W12 x H4.5m



SPECIFICATION

Length: 12m

Width: 12m

Height: 4.5m

IMPORTANT-----READ MANUAL FIRST

Improper site preparation, Assembly and Maintenance may invalidate warranty and cause unnecessary and costly mistake. If you have any questions contact your local dealer.

For User Friendly assembly we have identified each individual component with the part code as indicated in the parts list. Please refer to the part code numbers and drawing to ensure problem free assembly.

It's necessary to tighten the roof fabric enough to avoid "hammocks" on the roof and also re-tighten once or twice again after a few months of use. This is important when assembly in cold weather (autumn and winter) because the fabric is stiff then and when we got the sun and warm weather afterwards it will make the fabric "slack" again and need to be re-tighten before next winter.

It's the owners responsibility to take of snow immediately if not slide off by itself.

READ ALL INSTRUCTIONS BEFORE ASSEMBLY

1. Keep work area clean. Cluttered areas invite injuries. Do not set up near snow drifts, in slippery places, in high winds, or wet location.
2. Keep children away. All children should be kept away from the work area.
3. Don't over reach. Keep proper footing and balance at all times.
4. Do not assemble in under the influence of alcohol or drugs. Read warning labels on prescriptions to determine if your judgment or reflexes are impaired while taking drugs. If there is any doubt, do not assemble.
5. Be aware of possible windy conditions; fasten the bases in concrete if these conditions are likely to occur. Remove the cover during hurricane.
6. Be careful with power and heat sources. Do not keep heat sources near the tarpaulin. Do not expose to open flame.
7. Be aware of personal safety during assembly and use. Be careful not to pinch fingers with clips and tubes when assembling; when using makes sure there is adequate ventilation for exhaust and other dangerous fumes.

Parts list

Part Code	Description	Qty
1	Top bent tube	5
2	Upper bent tube	10
3	Lower bent tube	10
4	Purlin	28
5	Crossing Steel wire	16
5A	Top steel wire rope	5
6	Clips	52
7L	Left Base Plate for corners	5
7R	Right Base Plate for corners	5
7	Angle plate for base plate	10
8	Ratchet	10
8A	Nylon Strap for ratchet	10
9	base plate for standing leg on the container	10
10	Upright on the container	10
11	Tensioning tube for roof cover	2 groups
12	Angle plate with hook	4
13	Roof cover	1
14	Rope	1 bundle
15	Bolt 12*40mm	50
16	Carriage Bolt M 10*90mm	35
17	Carriage Bolt M8*80mm	100
18	Plastic Plug	4
19	PVC tube	2 groups
19A	Small ratchet with straps	28

EQUIPMENT AND TOOLS FOR INSTALLATION

1. Measuring tape
2. String for alignment
3. Step ladder
4. Welder
5. Sledge hammer
6. Wrench
7. Scissors

INSTALLATION PROCESS

A---BASE INSTALLATION

Please refer to the diagram (Figure 1) to place the base plates. UNIT: m

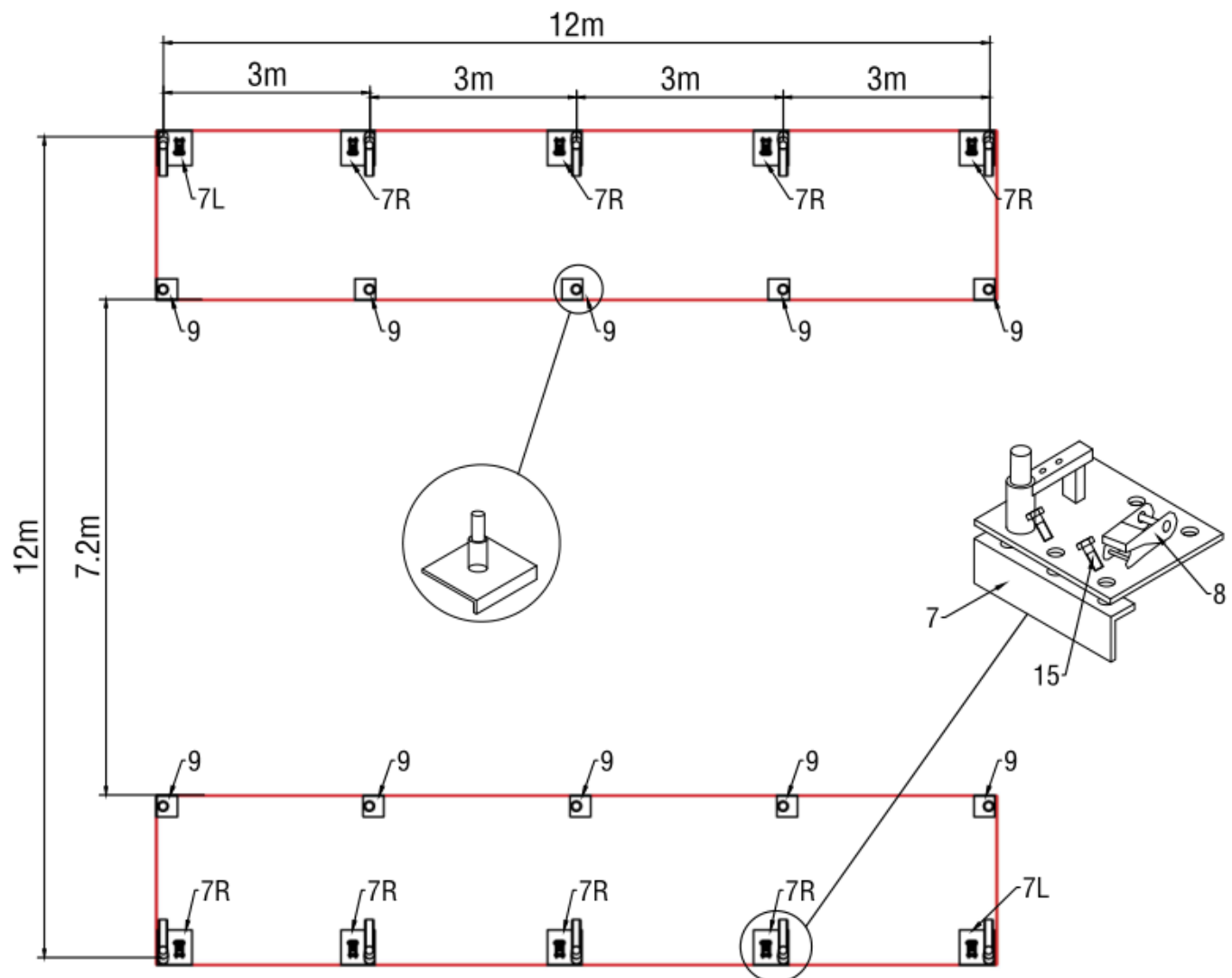


Figure 1

1. The measure if from center to center of the tubes. Referring to the above diagram and confirm the place of the base plates. ENSURE THAT THE FOUNDATIONS IS SQUARE.
2. All the base plates need to use welder to be welded on the Containers.

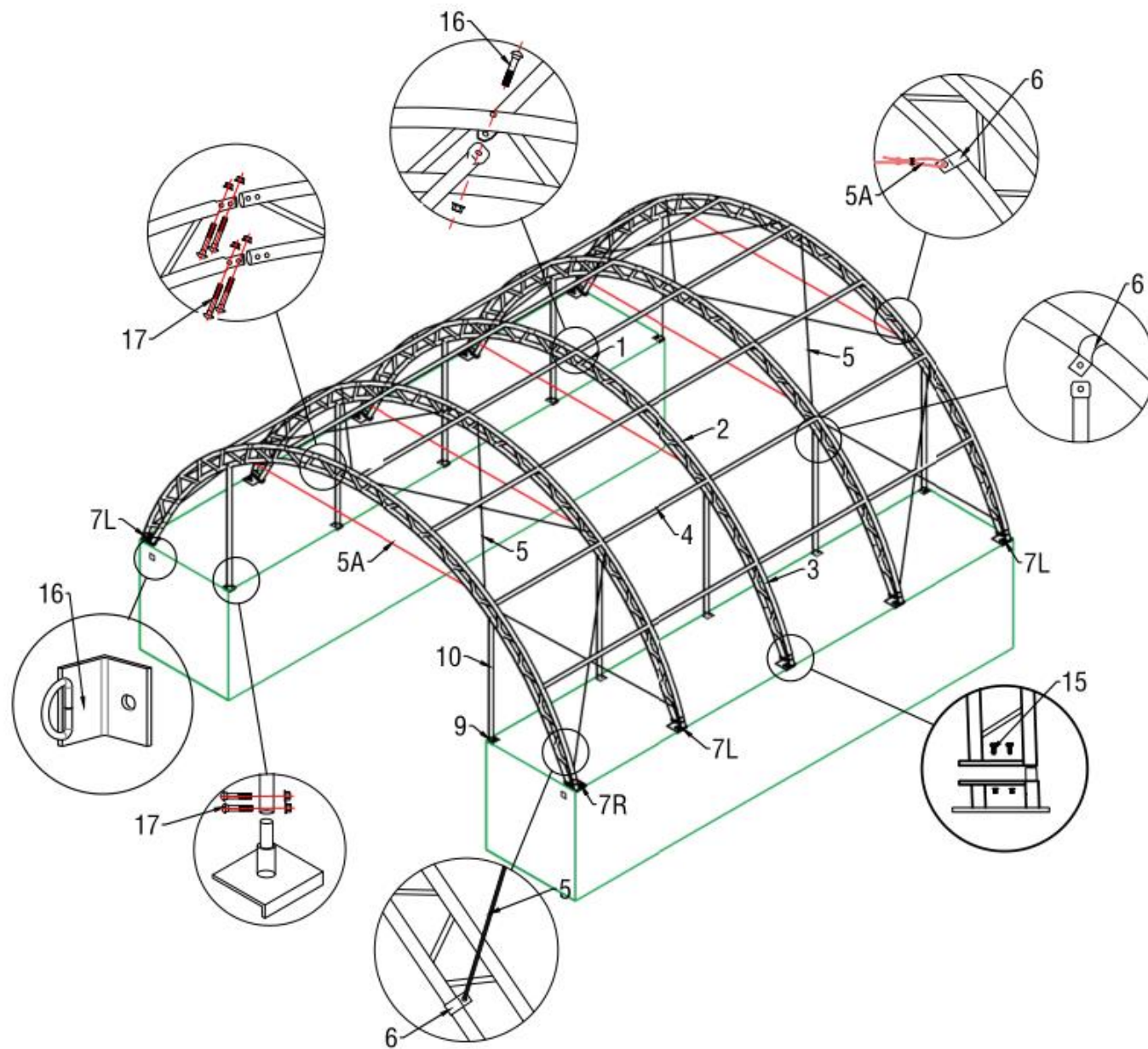


Figure 2: Size: L12x W12 x H4.5m

B— FRAME INSTALLATION

Note: Do not tighten down the nuts completely until frame is fully assembled and set in place, the arches and the front and back panel should be assembled well on the ground before erected into the Base plate.

After every two groups of arch is installed into the base plate, the purlins between them should be installed immediately for avoiding collapse caused by strong wind.

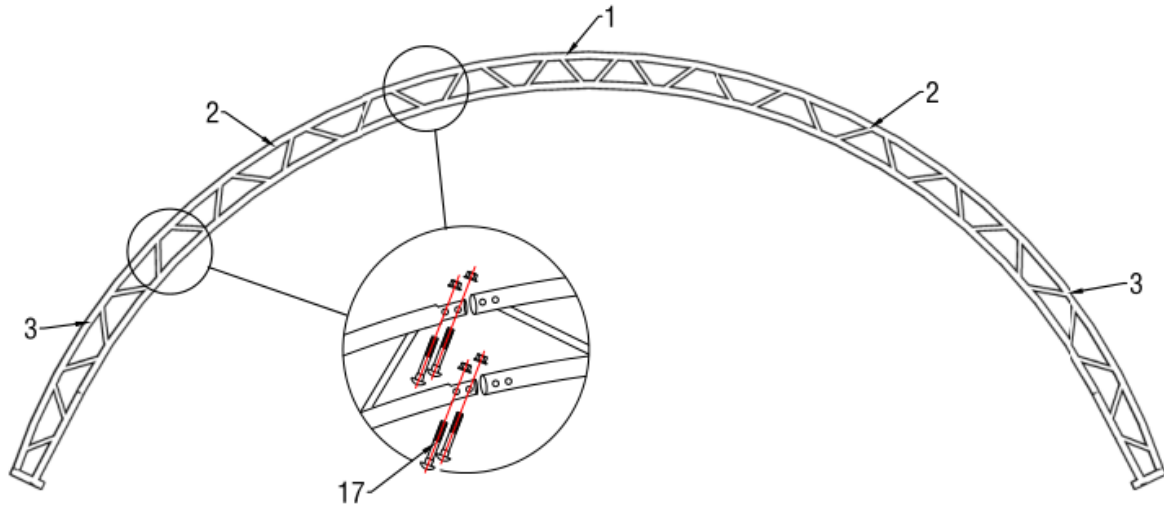
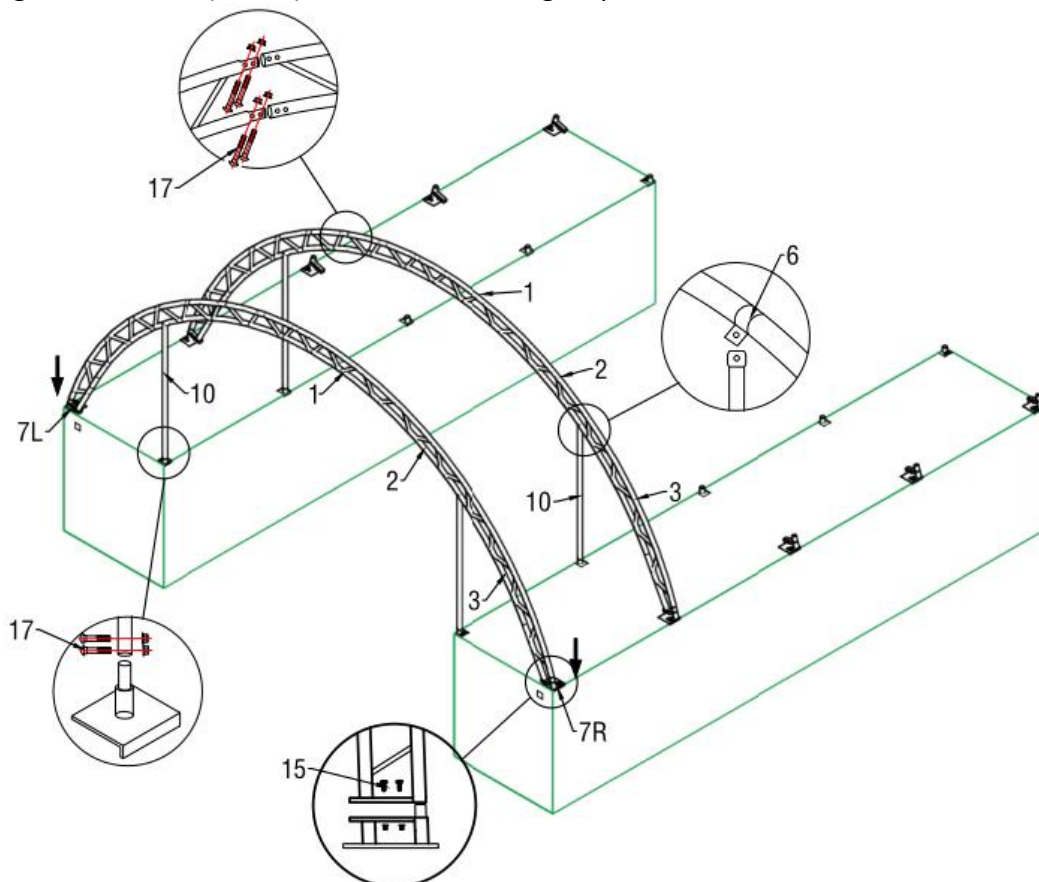


Figure 3

1. As Figure 3 shown to connect Top bent tube (No.1), Upper bent tube (No.2), and Lower bent tube (No.3) by using M8*80 Bolts (No.17), There are total 5 groups of same arch frame.



2.

Figure 4

3. Then put the arch into tube of the Base flange by hoist (see Figure 4).

4. Connect Upright on the container (No.10) to arch frame and to base plate by using clip(No.6) and Carriage Bolt M8*80mm(see Figure4).

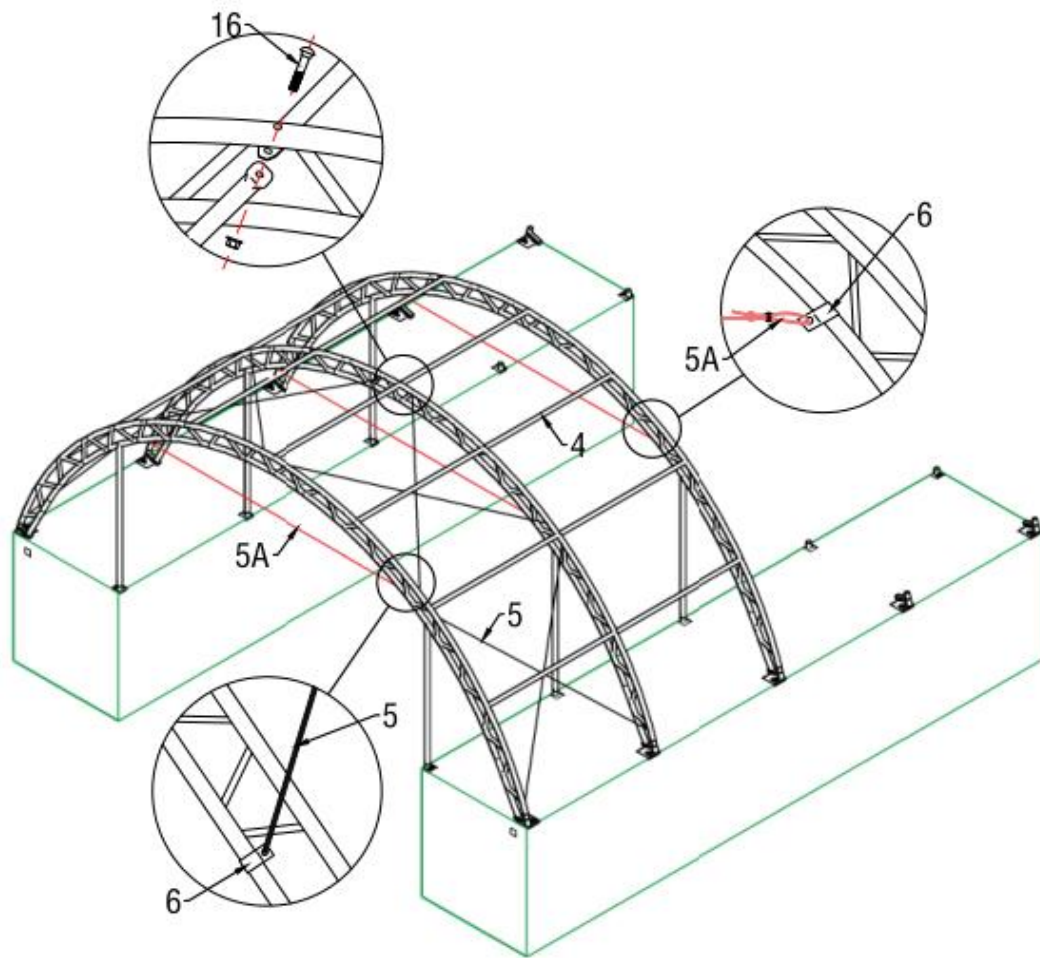


Figure 5

5. Connect Purlin (No.4) to arch by using Carriage bolt M10x90mm(No.16) by turns, then connect the Crossing Steel wire(No.5) by using Clip(No.6) to the arch frame(see Figure 5).

C—INSTRUCTION THE ROOF COVER

NOTE: DO NOT install the cover onto the frame of your building in high wind conditions. A slight breeze is the most advantageous for cover installation. To take advantage of the breeze, pull the cover up over the arches with the breeze blowing in the cover like a sail filled with air.

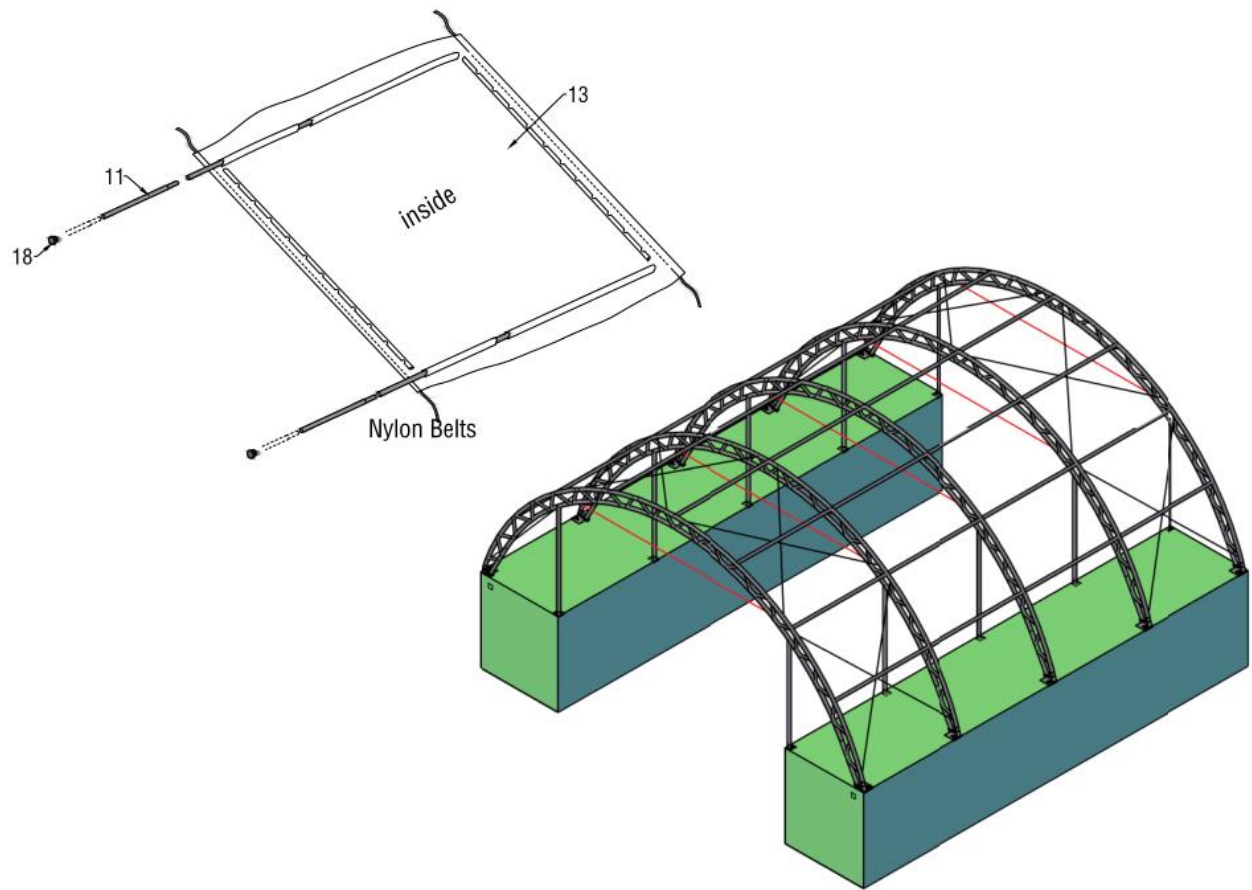


Figure 6

1. Spread the roof cover (No. 13) and lay parallel to one side of the frame.
2. Insert the tensioning tube (No. 11) into the roof cover and cut some pockets which correspond to the position of ratchet. Then place the plastic plug (No. 18) on each end of tubes.

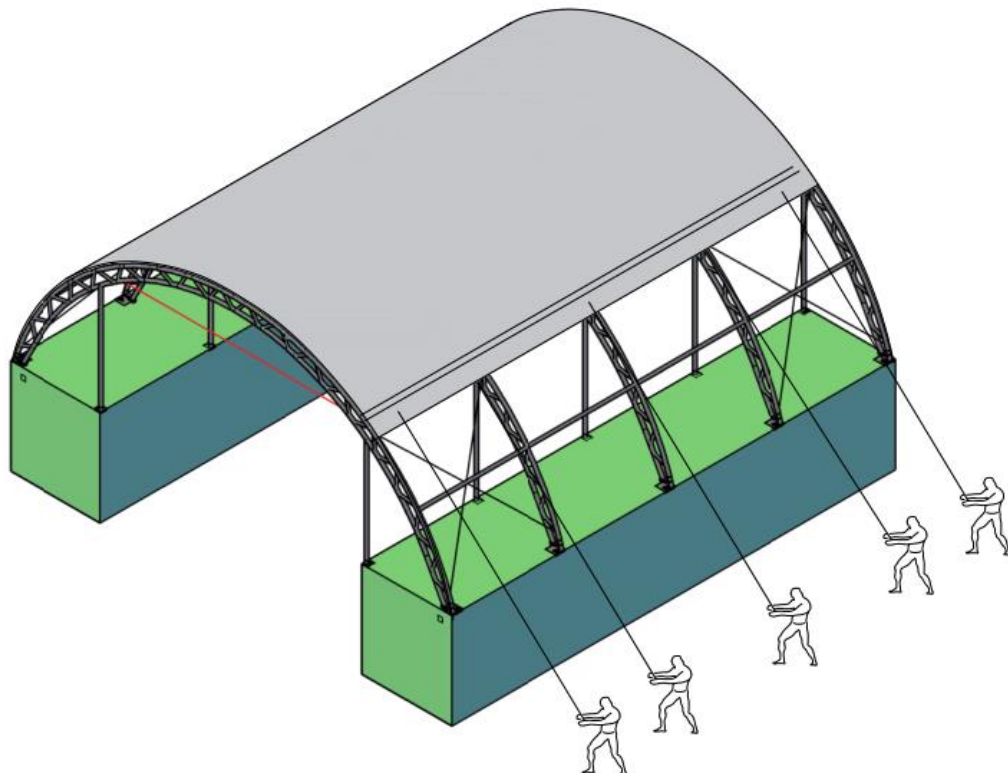


Figure 7

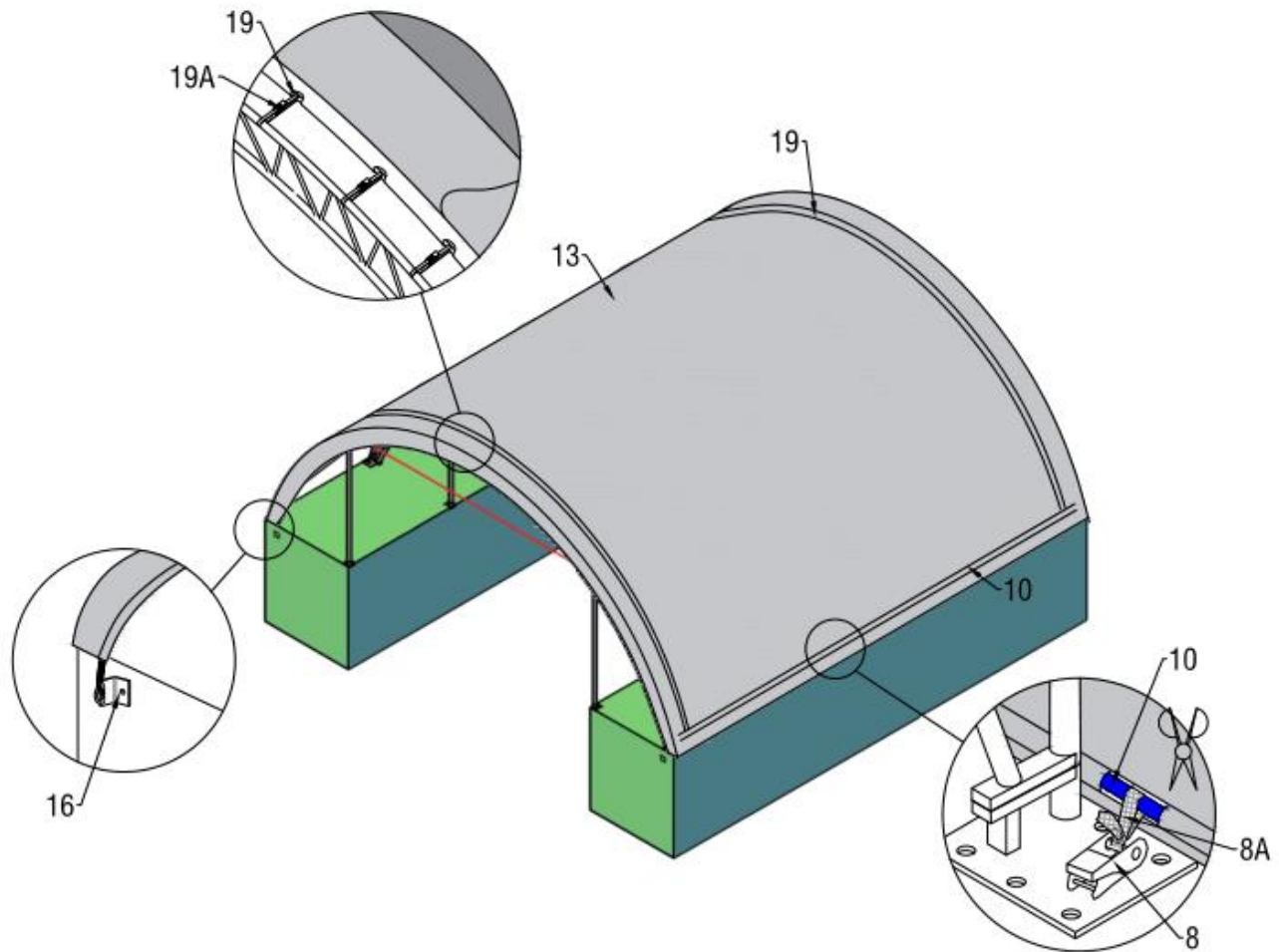


Figure 8

3. Attach the ropes and throw over the frame. Then pull the roof cover **EVENLY, CAREFULLY AND SLOWLY**, find the Nylon band over tube tied to ratchet (No.8).

4. The roof cover is tensioned from front to back by the rope lacing to grommet flaps inside the main cover, inside the unit at both front and rear arches. Using the rope provided, lace the main cover grommet flap around the main frame front and rear arch pieces. Start in the top middle of each arch, and lace to each side. Add rope length by tying pieces together or cutting as necessary.

5. Do not forget to insert PVC tube (No. 19) into the front and back ends of roof cover, and fix them by using Small Ratchet (No.19A). Finally knit them using rope as the above figure.

CONGRATULATIONS: NOW YOUR ASSEMBLY IS COMPLETED.

NOTE: DO NOT LEAVE THE ROOF COVER UNATTACHED UNDER ANY CIRCUMSTANCES until the final assembly and tightening has been completed. The process is quite easy. But some tightening adjustments will be necessary to produce a flat, tensioned roof cover. Please adjust the roof cover every month.